

## Different Plants For Different Wildlife

To make the most of your garden as a biodiversity refuge, plant a diversity of native plants and include ones with edible berries and seeds and ones which produce lots of nectar.

Books on wildlife gardening and free leaflets from various organisations will help you choose plants to attract the creatures you would most like to see in the garden.

**Trumpets and bells for bees**



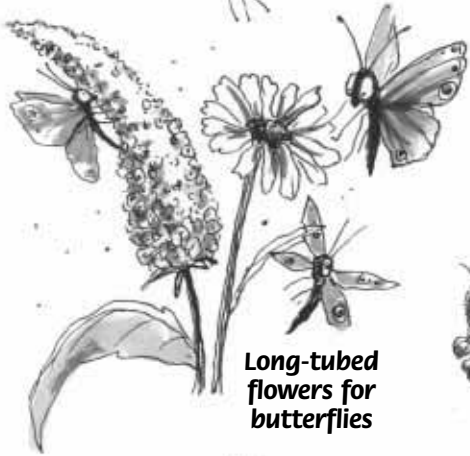
**Flat-opening flowers for short-tongued insects**



**Leaves for caterpillars**



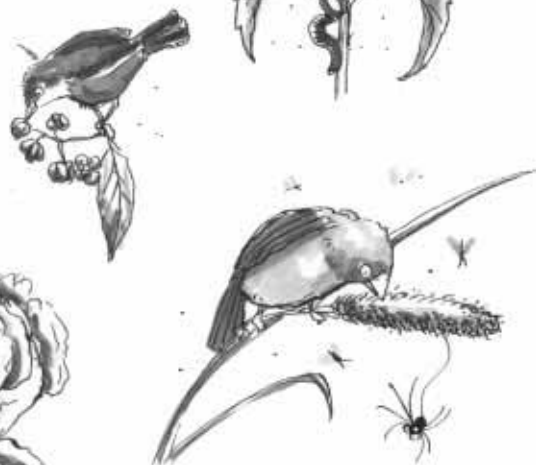
**Long-tubed flowers for butterflies**



**Night scented flowers for moths**



**Fruits and seeds for birds**



# Homes & Hidey Holes

All kinds of animals can find a home in your garden. If you create many different kinds of living spaces (habitats) in the garden, then many kinds of animals can move in which children will love to search for and watch.

## Which Home?

Stick the Homes and Hidey Holes stickers from the sticker sheet onto a sheet of card. Cut around each sticker. Can you match each animal with its home?



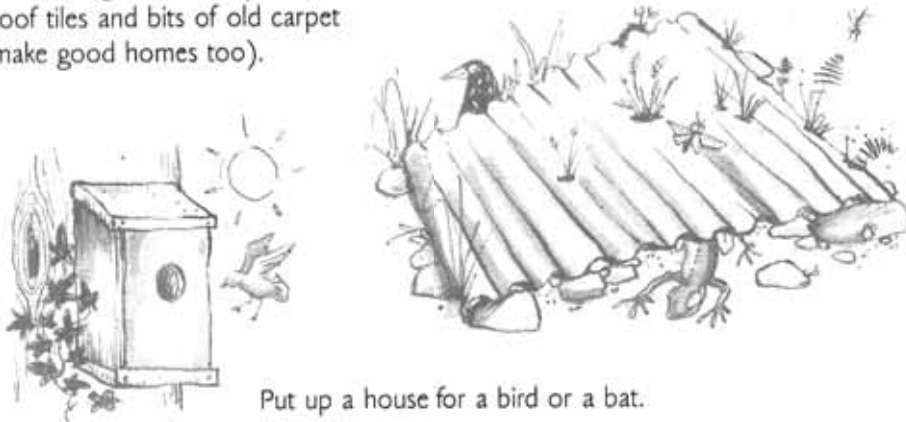
Keep the cards for the Homes and Hidey Holes game.

## Making Homes

Make a cool dark home for a snail – it might live there for years.



Make a warm shelter for a lizard, slow worm, frog or mouse (black plastic, roof tiles and bits of old carpet make good homes too).



Put up a house for a bird or a bat.

Rotten logs make great homes for beetles, woodlice, snails, slugs, spiders, millipedes and centipedes. Its fun to lift the logs and find out who has moved in. Always replace the log. It could be the roof of a minibeast's house.

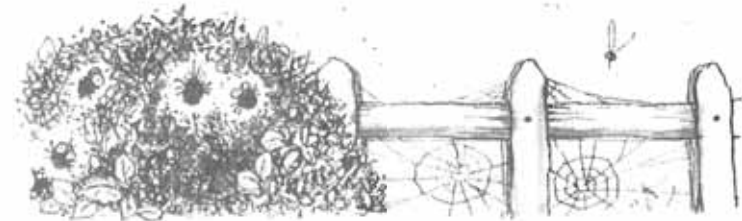


## Creating Habitats - Creating Homes

Different types of plants create homes for different types of animals. The greater the variety of plants in a garden then the greater the variety of animals that live there.



Shrubs, bushes and climbers planted against a fence make great shelters for animals.



Winter is a difficult time of year for animals to find shelter. Bonfire piles make highly desirable winter accommodation for many animals if burning is left until the spring.

